

Overview

3M 2308 Masking Tape is a high quality and very reliable type of masking tape used for everyday masking applications.

This tape is manufactured from a crepe paper backing with a pressure-sensitive, rubber-based adhesive that sticks fast and adheres to most types of surfaces. The tape resists lifting or curling and can be accurately applied around tight turns and complex shapes thanks to its high conformability.

3M 2308 resists paint bleed through and is an exceptionally well-made tape with a few of those little features you come to appreciate the more you use it.

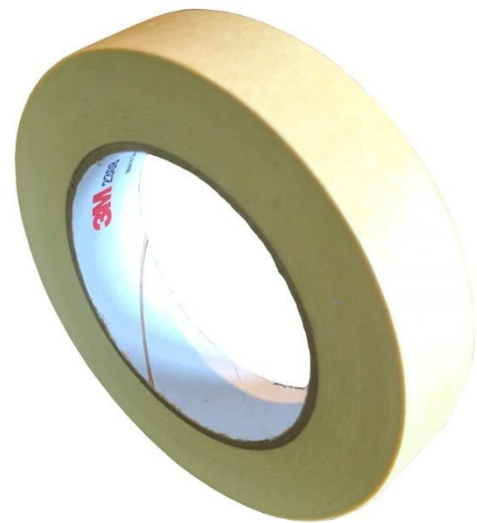
These include the fact it can be torn by hand, but has controlled unwind characteristics, which makes it less likely to tear inadvertently as you remove it from the roll. This allows it to work well with paper dispensers.

Typical applications include:

- General purpose masking for painting or applying adhesives.
- Sealing and bonding.
- Bundling and holding of cables, leads, wires, etc...
- Other jobs that require a pressure sensitive tape.

3M 2308 General Purpose Masking Tape Sizes.

The table below lists all our standard sizes of 3M 2308 Masking Tape. To quickly find any on our website, just search for the SWM part number listed. Alternatively, browse the full range at swiftsupplies.com.au/3m-2308-masking-tape-range



Key Specifications

Colour	Tan
Adhesive	Rubber Pressure Sensitive
Backing	Crepe Paper
Temperature Rating	121°C for 30 Minutes max.
Elongation	10%
Total Thickness	0.13mm
Tensile Strength	385 N/1000mm
Adhesion to Steel	38 N/100mm

Part Number	Tape Width	Roll Length
SWM000015B01V0001	18mm	55 Metres
SWM000015B01V0002	24mm	55 Metres
SWM000015B01V0003	36mm	55 Metres
SWM000015B01V0004	48mm	55 Metres