

# Copper Cable Link Quick Reference Guide



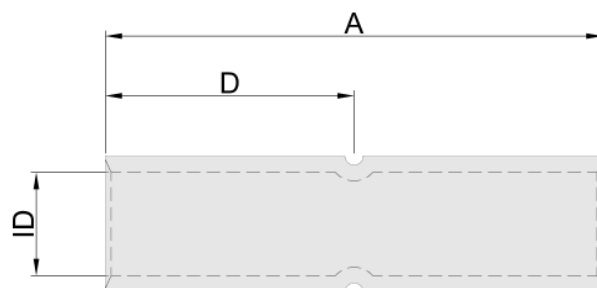
Our Copper Compression Links are manufactured from high purity (99.9%) extruded copper tube. This tube is then formed, annealed and electro plated. The result is a high-quality compression link which is reliable and economical.

These heavy-duty links are each stamped with their conductor size stamped on the barrel.

All our Copper Cable Links are manufactured to suit the requirements of Australian and New Zealand specifications and suit Australian metric compression tooling.



Cable Size	Part #	ID Size	A	D
1.5mm <sup>2</sup>	SWM000319B01V0001	1.8mm Ø	22mm	11mm
2.5mm <sup>2</sup>	SWM000319B01V0002	2.4mm Ø	22mm	11mm
4mm <sup>2</sup>	SWM000319B01V0003	3.1mm Ø	22mm	11mm
6mm <sup>2</sup>	SWM000319B01V0004	3.8mm Ø	22mm	11mm
10mm <sup>2</sup>	SWM000319B01V0005	4.7mm Ø	22mm	11mm
16mm <sup>2</sup>	SWM000319B01V0006	5.5mm Ø	44mm	22mm
25mm <sup>2</sup>	SWM000319B01V0007	7.1mm Ø	48mm	24mm
35mm <sup>2</sup>	SWM000319B01V0008	8.2mm Ø	48mm	24mm
50mm <sup>2</sup>	SWM000319B01V0009	9.5mm Ø	48mm	24mm
70mm <sup>2</sup>	SWM000319B01V0010	11.2mm Ø	52mm	26mm
95mm <sup>2</sup>	SWM000319B01V0011	13.4mm Ø	54mm	27mm
120mm <sup>2</sup>	SWM000319B01V0012	15.6mm Ø	66mm	33mm
150mm <sup>2</sup>	SWM000319B01V0013	16.7mm Ø	66mm	33mm
185mm <sup>2</sup>	SWM000319B01V0014	18.4mm Ø	66mm	33mm
240mm <sup>2</sup>	SWM000319B01V0015	21.2mm Ø	91mm	45mm
300mm <sup>2</sup>	SWM000319B01V0016	23.5mm Ø	91mm	45mm
400mm <sup>2</sup>	SWM000319B01V0017	26.8mm Ø	91mm	45mm



## Copper Cable Lug Standard Sizes.

The table above lists all our standard sizes of Copper Cable Links. To quickly find any on our website, just search for the SWM part number listed. Alternatively, browse the full range at [swiftsupplies.com.au/cable-links](https://swiftsupplies.com.au/cable-links)